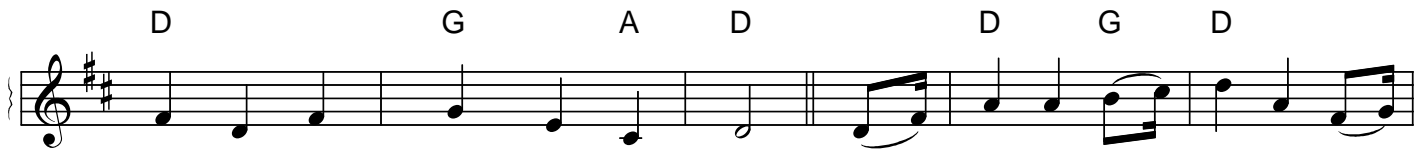


# Sans Day Carol

traditional Cornish  
harm. by Edward L. Stauff



1. Now the hol-ly bears a ber-ry as white as the milk, and Ma-ry bore
2. Now the hol-ly bears a ber-ry as green as the grass, and Ma-ry bore
3. Now the hol-ly bears a ber-ry as black as the coal, and Ma-ry bore
4. Now the hol-ly bears a ber-ry as blood is it red, then trust we our



Je - sus, all wrapped up in silk;  
Je - sus, who died on the cross; And Ma - ry bore Je - sus our  
Je - sus, who died for us all;  
Sa - viour, who rose from the dead;



Sa-viour for to be, and the first tree in the green-wood, it was the hol - ly, hol -



ly, hol - ly, and the first tree in the green-wood it was the hol - ly.